

CYP Mental Health and Wellbeing Strategy: 2023-25 Refresh

PRIORITIES

Aim: Reduce systemic inequities in opportunities for positive mental health and wellbeing in Doncaster



Priority One

Deliver system-wide early intervention for whole family mental health and wellbeing that improves the resilience, communication and self-regulation skills of children, young people and their families.



Priority Two

Deliver mental health support services that provide both equitable access and outcomes for all and place voice and lived experience at the centre of provision for children, young people and their families.

PROJECTS

Priority One

Project	Rationale	Responsible Owner	Delivery Lead	Proposed Timeframe
Develop a local offer, in partnership with Integrated Care Systems, for infant, children, young people's mental health which outlines the support available in Doncaster.	To simplify for children, young people, and families the process of finding appropriate early intervention for mental health and wellbeing.	Emma Price	James Perkins	March 2024
In-depth review of mental health services for vulnerable children and young people. This will include those presenting at the Emergency Department and Children in Care	Significant increase in presentations at the Emergency Department for mental health. Request from the Corporate Parenting Board	Lee Golze	Working Group	ED Presentations by July 2024 Children in Care by Dec 2024

Develop, in partnership with Integrated Care Systems, a broader offer to groups that experience barriers in accessing wellbeing support.	To help address the inequalities that emerge for children in Doncaster.	Lee Golze	-	August 2024
Develop a single system-wide early help mental health needs assessment so that children and young people are only required to tell their story once.	To address consultation feedback related to the organisation of early intervention and connectedness of the system.	Christina Harrison Alison Tomes	Ruth Parkes Emma McDonagh	August 2024

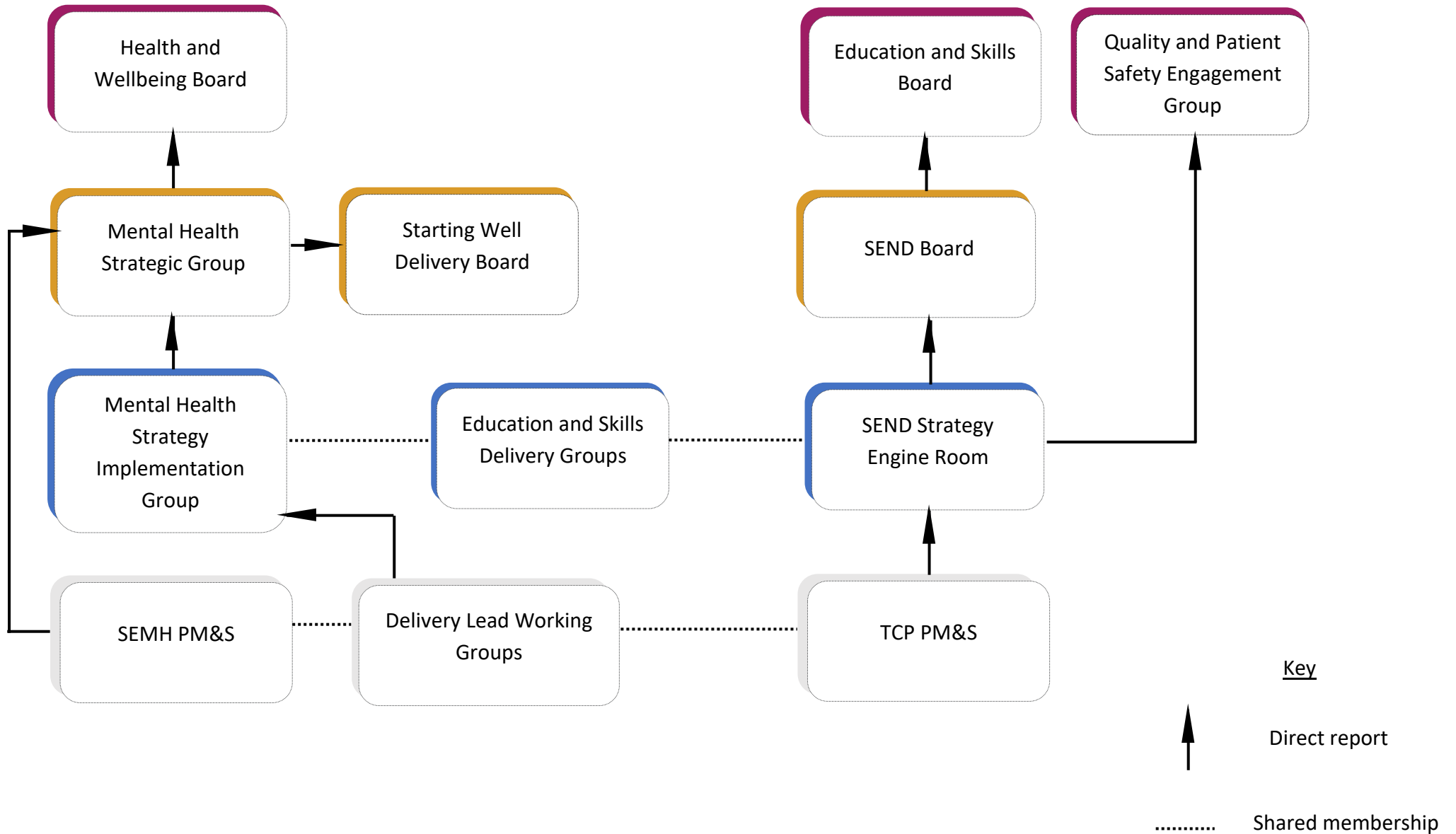
Priority Two

Project	Rationale	Responsible Owner	Delivery Lead	Proposed Timeframe
Develop a dedicated mental health service offer, with all partners and families, around early	To help address the inequalities that emerge in the early years for children in Doncaster.	Alison Tomes	Callum Helman	August 2024

years which draws on support offered through parenting programmes, health visiting, perinatal mental health services, and family hubs.				
Establish a co-ordinated approach to utilising local datasets to better inform service delivery and experience for children, young people, and families.	To address inequities in service experience for children, young people, and families and implement evidence informed policy.	Mental Health Strategic Group	Kate Featherstone-Bennett David Woodcock	August 2024
Establish a pilot scheme for dedicated pathways to mental health support services for individual communities based on provisional mapping and localities exercises.	To address inequities in service access for children, young people and families and implement evidence informed policy.	Christina Harrison	James Perkins Kate Featherstone-Bennett	August 2025



PROPOSED GOVERNANCE STRUCTURE



PROPOSED KEY GROUP RESPONSIBILITIES AND MEMBERSHIP

Group	Key Responsibilities	Proposed Membership	Frequency
Mental Health Strategic Group	<ul style="list-style-type: none"> Meet quarterly with prioritised attendance from members where possible, or a nominated deputy if not. Provide challenge, scrutiny, and strategic direction to the implementation group. 	Andrea Ibbeson (co-chair) Lee Golze (co-chair) Christina Harrison Emma Price Martyn Owen Jane Reed Alison Tomes Kate Featherstone-Bennett David Woodcock Rachael Leslie	Quarterly
Mental Health Strategy Implementation Group	<ul style="list-style-type: none"> Meet monthly, with prioritised attendance from members where possible, or a nominated deputy if not. Report project delivery and performance metric updates into the mental health strategic group on a quarterly basis. 	James Perkins Ruth Parkes Kate Ashley Kate Featherstone-Bennett David Woodcock Callum Helman Laura Booth	Monthly

PROPOSED PERFORMANCE METRICS

Priority One

Deliver system-wide early intervention for whole family mental health and wellbeing that improves the resilience, communication and self-regulation skills of children, young people and their families.

Priority Two

Deliver mental health support services that provide both equitable access and outcomes for all and place voice and lived experience at the centre of provision for children, young people and their families.